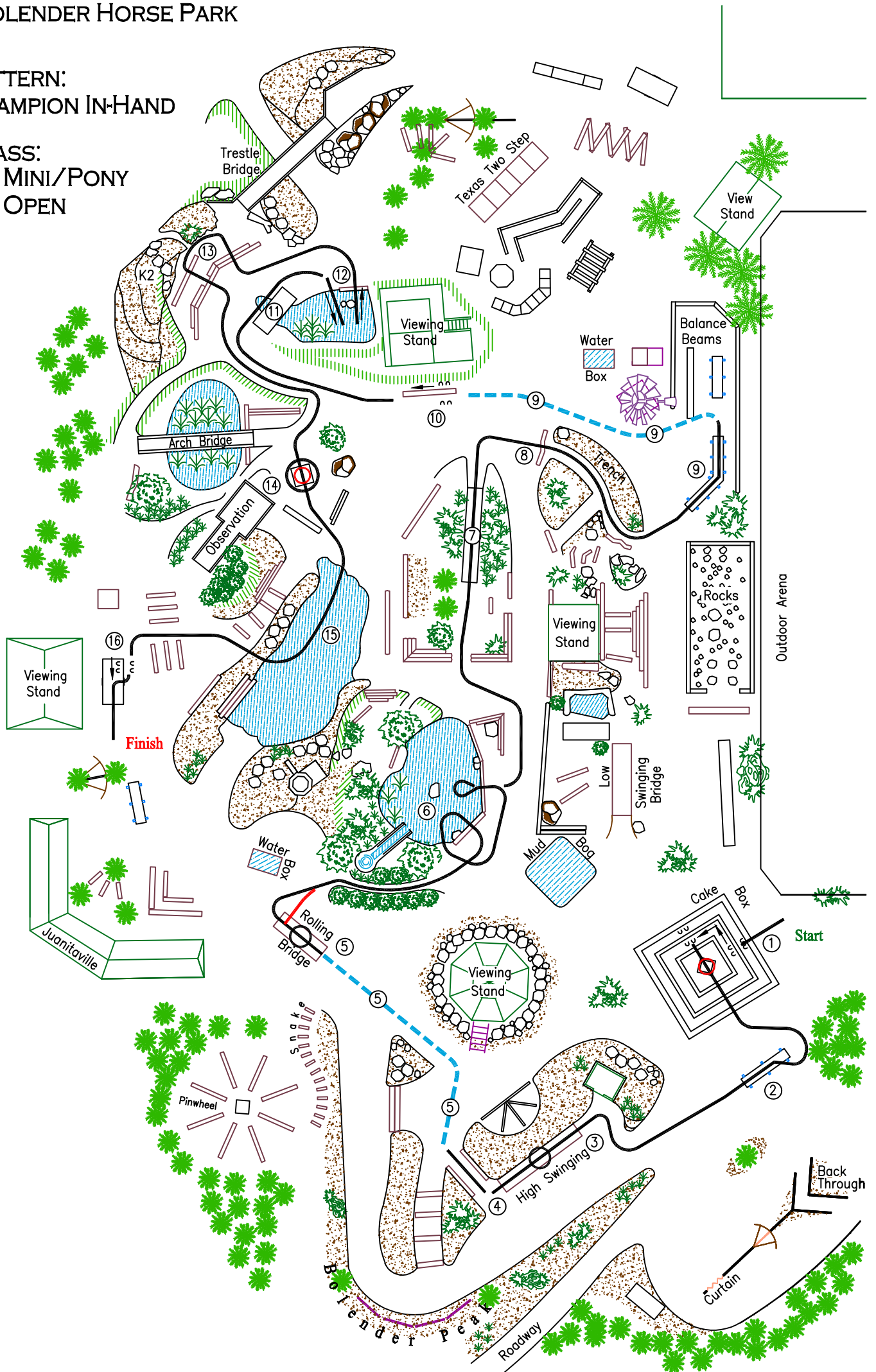


# BOLENDER HORSE PARK

PATTERN:  
CHAMPION IN-HAND

CLASS:  
MINI/PONY  
OPEN



- walk
- - - trot
- Mini/Pony



1. Cake Box, walk up, side pass, walk off  
Mini/Pony: 360° turn on top
2. Balance Beam as shown
3. Swinging Bridge, 360° turn
4. Back
5. Trot, Rolling Bridge, 360° turn  
Mini/Pony: exit as shown
6. Pond
7. Long Bridge
8. Trench
9. 45 Balance Beam, Trot
10. Side Pass
11. Puddle
12. Back into pond, walk out
13. K2
14. Box, Send around, step up, walk off  
Mini/Pony: 360° turn on box
15. Pond
16. Teeter Totter, side pass to center,  
step up, walk off