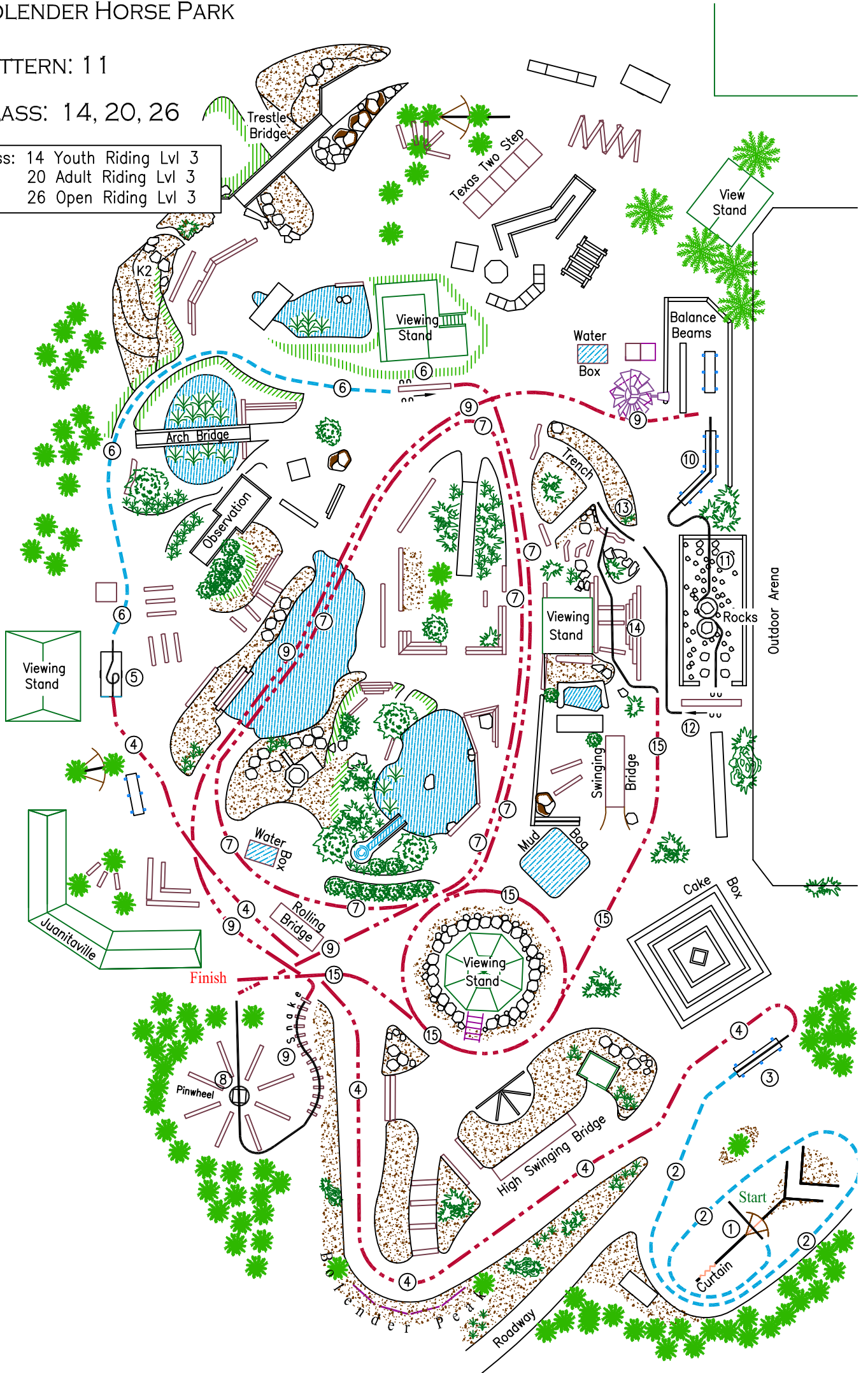


BOLENDER HORSE PARK

PATTERN: 1 1

CLASS: 14, 20, 26

Class: 14 Youth Riding Lvl 3
 20 Adult Riding Lvl 3
 26 Open Riding Lvl 3



- walk
- - - trot
- · - cantalope

1. Gate
2. Trot
3. Balance Beam
4. Cantalope
5. Teeter Totter, 180° turn, back off
6. Trot, Side Pass
7. Cantalope, loop through water
8. Box, 360° turn
9. Snake, Cantalope
10. 45 Balance Beam
11. Rocks, Figure 8
12. Side pass
13. Back into Trench
14. Logs
15. Cantalope

