

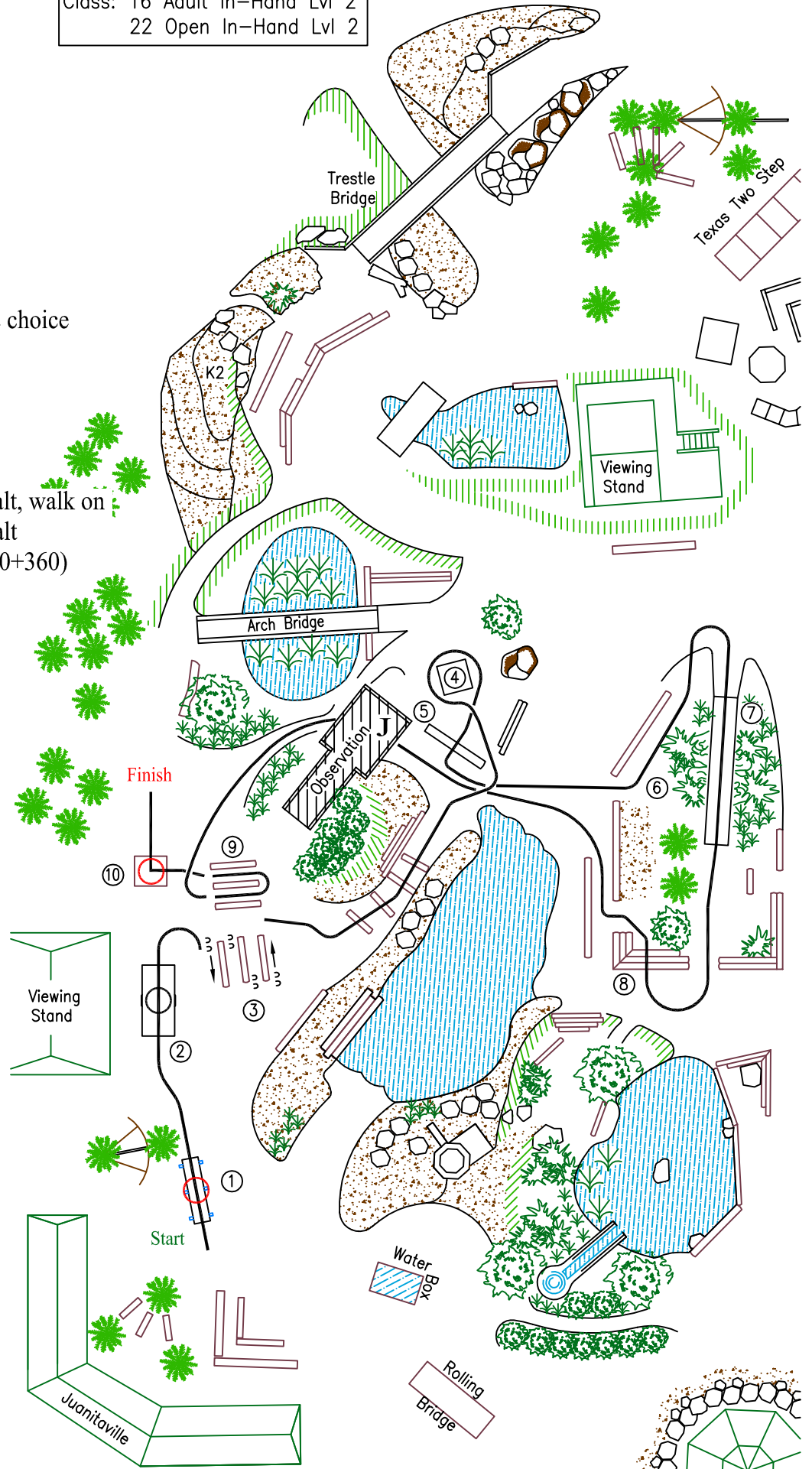
# BOLENDER HORSE PARK

Class: 16 Adult In-Hand Lvl 2  
22 Open In-Hand Lvl 2

PATTERN: 9

CLASS: 16, 22

1. Balance Beam  
Mini/Pony: 360° turn
2. Teeter Totter, 360° turn
3. Side Pass Logs
4. Send around Box, handler on the ground, direction handlers choice
5. Step Down
6. Trail
7. Long Bridge
8. Jump Up
9. Back Logs
10. Box, step up 2 feet on box, halt, walk on 90° turn, two feet off box, halt  
Mini/Pony: 450° turn (90+360)



- J** = Judge location  
 ————— walk  
 - - - - - trot  
 ———— mini/pony only

